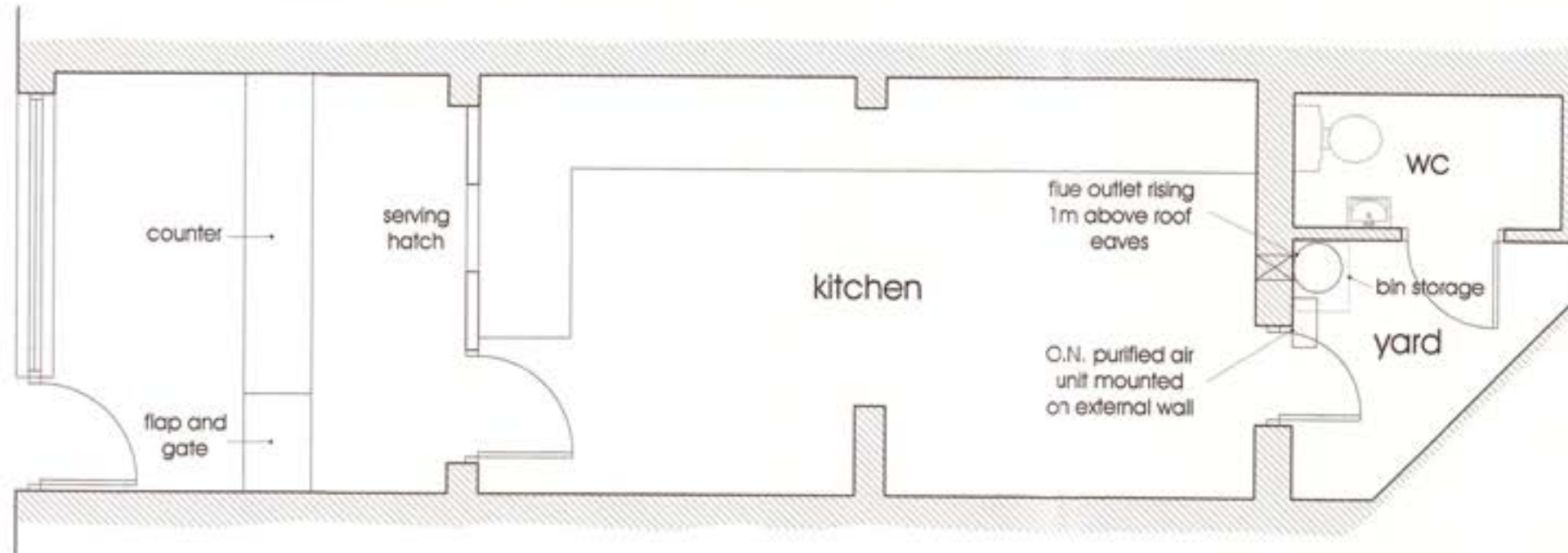
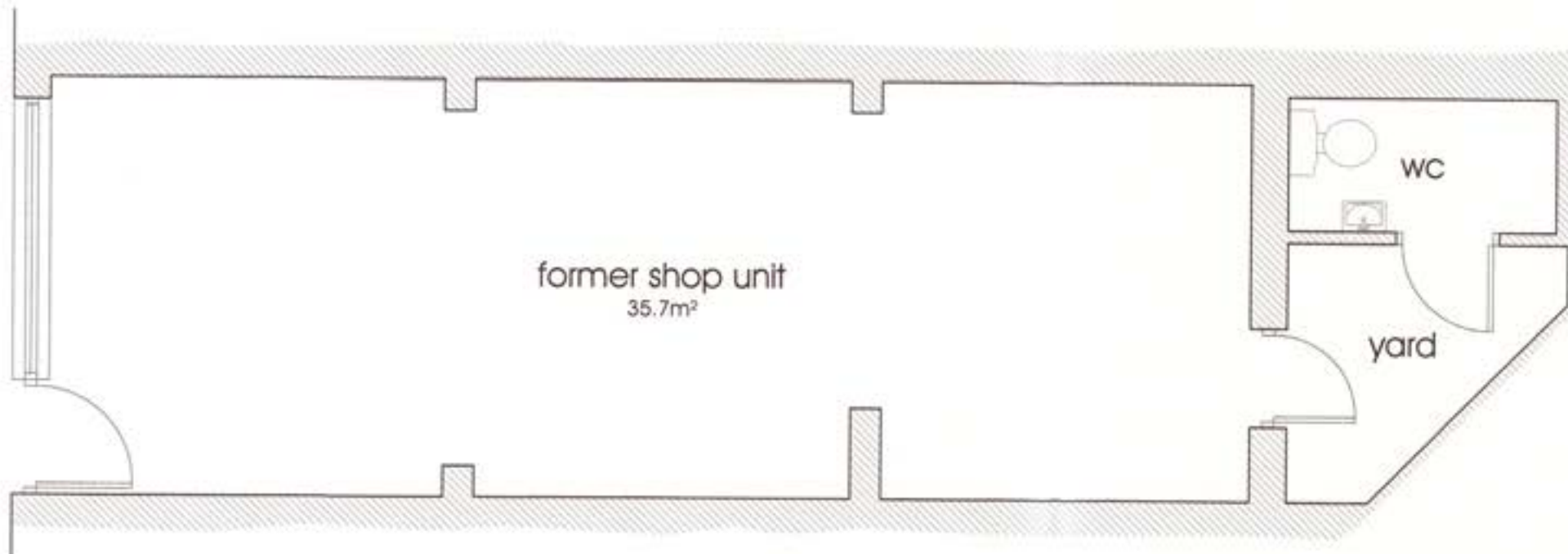


FLOOR PLANS



Proposed Floor Plan



Existing Floor Plan

DCAN 15 | PPS 5

The shop unit falls within Belfast City Centre in a well established shopping area on Sandy Row adjacent to Shaftsbury Square. There is no proliferation of fast food outlets in this location, and the very small retail unit has been vacant for some time now with little interest in retail use. A change to fast food would bring the unit back into use, ensuring the vitality of the street frontage onto Sandy Row.

Refuse Disposal:

Bins stored in external yard and relocated to street for council collection. Oils / fats stored in sealed containers for private disposal / recycling.

Odour Abatement:

Wall-mounted odour abatement system with appropriate acoustic housing and associated ventilation ducting. Flue outlet rising 1m above roof eaves of rear return.



Drawing Number.....02

DOE
O.N.100 Air Purifier